

# FACT SHEET

## SUPPORTING THE YOUTH IN SOUTHERN HIGHLANDS TO IMPROVE LIVELIHOODS

2018

By: *Patrick Tuni Kihenzile*

*Dr. Lunogelo Hoseana Bohela*

### EMPOWERING THE YOUTH IN AGRIBUSINESS VALUE CHAIN

#### EMPOWER YOUTH IN COMMERCIAL FARMING

##### **APPROACH:**

- Greenhouse Farming
- Irrigation Farming

##### **ENTERPRISES**

- Vegetables and Fruits
- Irish Potatoes (Potato Farming, Aggregation)
- Maize and Beans
- Poultry: Chicken-Meat and Eggs, Feeds, Agro Veterinary Shops, Hatchery
- Piggery
- Dairy Farming

##### **EMPOWER YOUTH IN VALUE ADDITION AND TRADING**

- Processing
- Packaging
- Transportation
- Market Place Access Standardization & Certification

##### **SUPPORT BY EAYIP**

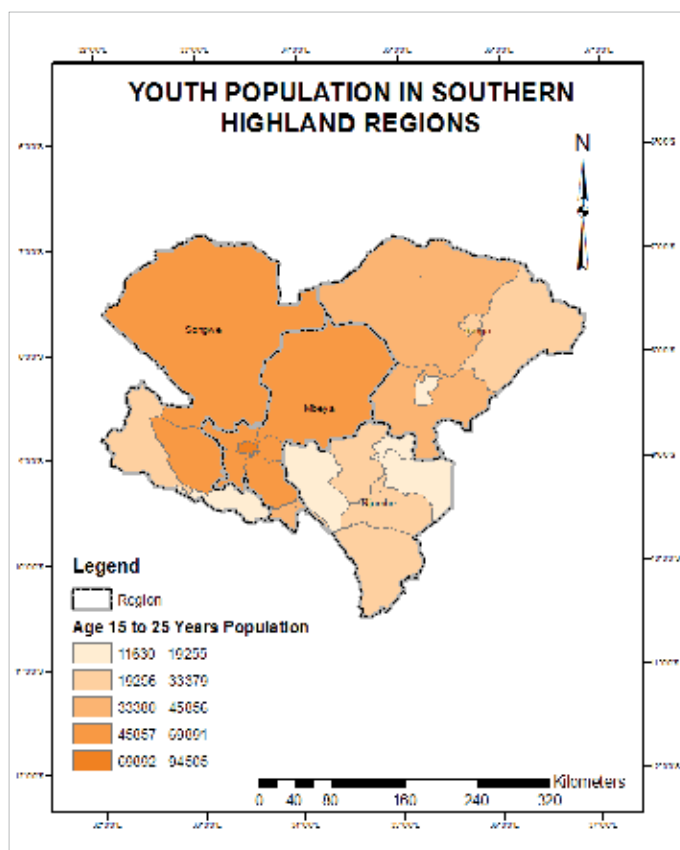
- Create Self-Awareness
- Identify Opportunities
- Provide Technical Knowhow
- Provide Financial Literacy
- Provide Entrepreneurship
- Link with Financial Institutions
- Link with Markets & Service Providers

##### **YOUTH FORUM:**

- Establish Youth Platform for Policy Articulation

## WHERE ARE THE YOUTH?

EAYIP Youth are found in four selected regions as follows: Songwe, Mbeya, Iringa and Njombe. The following Map shows the youth population in those areas.



## POLICY AND LEGAL REFORMS

### INSTITUTIONAL ALIGNMENTS

- Youth Fora: Village and higher levels to engage youth in exchanges & planning processes
- Extension and research services support
- Corporate Social Responsibility (CSR) for Youth

### NATURAL RESOURCE ACCESS

- Land: Establish Agricultural Parks for Youth
- Water for Irrigation: Efficient water usage
- Environmentally sustainable production systems

### PRODUCTION SYSTEMS

- Technology Transfer and Adoption
- Reducing costs of farm implements/inputs
- Access to government subsidized inputs

### MARKETING SYSTEMS

- Enhanced market efficiency for better commodity prices (e.g. warehouses, MIS)
- Enforcement of designated market places
- Enforced weights and measures for products

### ACCESS TO FINANCE

- Cultivating savings culture among youth
- Linking youth groups with finance guarantees
- Enhanced disbursement of 4% LGA revenue

### KNOWLEDGE BASE

- Agricultural education schools
- Use of ICT in Information and Knowledge
- Exchange of Experiences among youths



### The Economic and Social Research Foundation (ESRF)

51 Uporoto Street, Ursino Estate. P.O Box 31226, Dar es Salaam, Tanzania  
 Mobile: +255-754 780133, +255-655 780233 Tel: +255-22 2926084 - 90 Fax: +255-22 2926083  
 E-mail: [esrf@esrf.or.tz](mailto:esrf@esrf.or.tz) or [info@esrf.or.tz](mailto:info@esrf.or.tz) Website: <http://www.esrf.or.tz>