



ANNUAL REPORT 2009





ECONOMIC AND SOCIAL RESEARCH FOUNDATION



ESRF

ANNUAL REPORT 2009

United Republic of Tanzania





ESRF ANNUAL REPORT 2009

Published By:

Economic and Social Research Foundation (ESRF)
51 Uporoto Street, (Off Ali Hassan Mwinyi Road), Ursino Estate,
P.O. Box 31226,
Dar es Salaam, Tanzania,
Tel: (+255) 22 2760260, 2760751/52,
Mobile: (+255) 754 280133,
Fax: (+255) 22 2760062,
Email: esrf@esrf.or.tz
Website: www.esrftz.org

ESRF Managed Websites:

Tanzania Online (Tzonline): www.tzonline.org
Tanzania Development Gateway: www.tanzaniagateway.org
Tanzania Knowledge Network (TAKNET): www.taknet.or.tz
ESRF/REPOA/ISS Post-graduate Diploma Programme (PGD): www.esrf.or.tz/ma

ISBN: 978 - 9987 - 610 - 64 - 8

This publication was supported by The Government of the United Republic of Tanzania, The African Capacity Building Foundation (ACBF) and The International Development Research Centre (IDRC).



United Republic of Tanzania



CONTENTS

1. LIST OF ABBREVIATIONS	v
2. ACKNOWLEDGEMENT	vii
3. EXECUTIVE SUMMARY	1
i. Research and Publications	1
ii. Governance and Capacity Building	1
iii. Commissioned Studies	1
iv. Information Centre Unit	1
v. Information Technology Unit (ITU)	2
vi. Finance Unit	2
4. NOTE FROM EXECUTIVE DIRECTOR	3
5. INTRODUCTION	4
i. Background	4
ii. Vision	4
iii. Mission	4
iv. Objectives	4
6. 2008 - 2011 STRATEGIC PLAN	5
7. 16 YEARS OF EXCELLENCE	6
8. ORGANIZATION STRUCTURE	7
9. BOARD OF TRUSTEES	8
10. POLICY RESEARCH AND ANALYSIS	9
i. Research undertaken	9
11. COMMISSIONED STUDIES	11
12. CAPACITY STRENGTHENING FOR POLICY RESEARCH ANALYSIS	13
i. Introduction	13
ii. Policy Dialogue Seminars	13

iii.	Training	14
13.	KNOWLEDGE MANAGEMENT, DISSEMINATION AND POLICY VOICE/INFLUENCE	16
•	Information Management	16
i.	Tanzania Online (Tzonline)	16
ii.	Tanzania Knowledge Management Network (TAKNET)	17
iii.	Tanzania Development Gateway (TzDG)	17
14.	HOSTED NATIONAL, REGIONAL AND INTERNATIONAL PROGRAMMES AND NETWORKS	18
i.	Our Strategic Network Partners	18
•	Evidence Based Policy in Development Network (EBPDN) Africa	18
•	Southern and Eastern Africa Policy Research Network (SEAPREN)	18
•	Formative Process Research on Integration in Southern Africa Network (FOPRISA)	18
ii.	Hosted Programmes	19
•	Ford Foundation International Fellowships Program (IFP Tanzania)	19
•	Post Graduate Diploma in Poverty Analysis	20
15.	RESEARCH INFRASTRUCTURE	23
i.	Information Technology Unit	23
ii.	Human Resource	23
16.	FINANCIAL REPORT FOR THE YEAR 2009	25
17:	ESRF PUBLICATIONS	29
i.	List of Publications	29
ii.	Annual Reports	30
iii.	Tanzania Economic Series	30
iv.	Quarterly Economic Review (QER)	30
v.	TAKNET Policy Brief Series	32
18.	ESRF STAFF LIST 2009	33
i.	Directorate of Programmes	33
ii.	Directorate of Finance and Management Services	33
iii.	Project Staff	34

LIST OF ABBREVIATIONS

ACBF	African Capacity Building Foundation
ACP/EU	African Caribbean and Pacific/European Union
AERC	African Economic Research Consortium
AfDB	African Development Bank
APIF	African Policy Institutes Forum
BIDPA	Botswana Institute for Development Policy Analysis
BIEAC	Building an Inclusive East African Community
BLDS	British Library for Development Studies
BoT	Bank of Tanzania
CAADP	Comprehensive Africa Agriculture Development Programme
CMI	Christian Michelsen Institute, Norway
COMESA	Common Market for Eastern and Southern Africa
COSTECH	Tanzania Commission for Science and Technology
CSE	Civil Society Exhibition
CSO	Civil Society Organizations
CSR	Corporate Social Responsibility
CTI	Confederation of Tanzania Industries
CUTS	Consumer Unity & Trust Society
DPs	Development Partners
EAC	East African Community
EALA	East African Legislative Assembly
EBPDN	Evidence Based Policy Development Network
EPA	Economic Partnership Agreements
EPRC	Economic Policy Research Centre
ESRF	Economic and Social Research Foundation
FANRPAN	Food, Agriculture and Natural Resources Policy Analysis Network
FCS	Foundation for Civil Society
FEATS	Fostering Equity and Accountability in Trading Systems
FES	Friedrich-Ebert-Stiftung
FOPRISA	Formative Process Research on Integration in Southern Africa
GDN	Global Development Network
GFC	Global Financial Crisis
GoT	Government of Tanzania
HIV/AIDS	Human Immune Virus/ Acquired Immune Deficiency Syndrome
ICT	Information and Communication Technology
IDRC	International Development Research Centre
IFM	Independent Forest Monitoring
IFP	International Fellowship Program
IHI	Ifakara Health Institute
IOM	International Organization for Migration
IPAR	Institute of Policy Analysis & Research
ISS	Institute of Social Studies



IT	Information Technology
ITU	Information Technology Unit
KMC	Knowledge Management Centre
LAN	Local Area Network
MKUKUTA	Mkakati wa Kukuza Uchumi na Kupunguza Umasikini Tanzania
MKUZA	Mkakati wa Kukuza Uchumi na Kupunguza Umasikini Zanzibar
MoAFSC	Ministry of Agriculture Food Security and Cooperatives
MoHSW	Ministry of Health and Social Welfare
MTEF	Medium Term Expenditure Framework
NEPRU	Namibia Economic Policy Research Unit
NGO	Non Governmental Organization
NPA	Norwegian People's Aid
NSGRP	National Strategy for Growth and Reduction of Poverty
NTBs	Non Tarrif Barriers
ODI	Overseas Development Institute
PER	Public Expenditure Review
PERI	Programme for the Enhancement of Research Information
PgD	Postgraduate Diploma
PP	Placement Partners
QER	Quarterly Economic Review
RAPID	Research and Policy in Development
REPOA	Research on Poverty Alleviation
SADC	Southern Africa Development Community
SEAPREN	Southern and Eastern Africa Policy Research Network
SMEs	Small and Medium Enterprises
SWF	Social Welfare Fund
TAKNET	Tanzania Knowledge Network
TANGO	Tanzania Association of Non Governmental Organizations
TDV	Tanzania Development Vision 2025
TGNP	Tanzania Gender Network Program
TRIPS	Trade-Related Aspects of Intellectual Property Rights
TTI	Think- Tank Initiative
UDSM	University of Dar es Salaam
UN	United Nations
UN/JP4	United Nations Joint Programme on Capacity Building for Development Management
UNDP	United Nations Development Programme
UNICEF	United Nations Children's Fund
UPU	United Postal Union
WB	World Bank
WWF	World Wildlife Fund



ACKNOWLEDGEMENT

On behalf of the Board of Trustees, the Management and ESRF Staff, I would like to acknowledge the technical, logistical and financial support provided by the various national and international institutions during the year 2009; among these are:

- The Government of Tanzania (GoT)
- The Tanzania Development Gateway (TzDG)
- The African Capacity Building Foundation (ACBF)
- The International Development Research Centre (IDRC)
- The United Nations Development Programme (UNDP)
- The East African Community (EAC)
- The World Bank (WB)
- The Foundation for Civil Society (FCS)

We also wish to acknowledge other institutions and networks, with whom we collaborated during this period. These include;

Food, Agriculture and Natural Resources Policy Analysis Network (FANRPAN), The African Policy Institutes Forum (APIF), The Christian Michelsen Institute, Norway (CMI), The Ford Foundation International Fellowships Program in Tanzania (IFP), The International Institute of Social Studies of Erasmus University Rotterdam (ISS), Research on Poverty Alleviation (REPOA), The Economics Department of the University of Dar es Salaam, The African Economic Research Consortium (AERC) and The Bank of Tanzania (BoT).

H. Bohela Lunogelo
Executive Director,
May 2010

The Economic and Social Research Foundation (ESRF)



STAKEHOLDERS INTERACTIONS WITH ESRF



51 Uporoto Street, Ursino Estate.
P.O. Box 31226, Dar es Salaam, Tanzania.
Phone: (+255 22) 2760260 • Fax: (+255 22) 2760062
E mail: esrf@esrf.or.tz • Website: www.esrf.or.tz

EXECUTIVE SUMMARY

The Institution has completed the second year of The Fourth Medium Term Strategy (2008-2011) in December 2009. The strategy is being implemented by focusing on five main themes:

- Growth and Wealth Creation.
- Globalization and Regional Integration.
- Governance.
- Social Wellbeing and Quality of Life.
- Natural Resource Management (which was added in 2009).

Research and Publications

In 2009, a total of 11 research projects were planned, of which eight were completed as outlined in section one of this report (Policy Research and Publication). This was in addition to the 19 research projects carried forward from 2007.

There are still 3 research projects in various stages of implementation: Elimination of Non - Tariff Barriers (NTBs) in Trading within the East African Community, Strengthening Institutions and Public Expenditure Management and Accountability, and Trade in Agriculture in the East African Community (EAC): Implications on Food Security and Rural Livelihoods.

Governance and Capacity Building

During 2009, ESRF continued to conduct policy dialogue sessions in order to influence policy making processes mainly through a number of studies undertaken by our research unit. In 2009 the Foundation conducted the following key policy dialogue sessions: *The Role of Mobile Phones on Sustainable Livelihoods*, *Corporate Social Responsibility in Tanzania: The Case of Mining Sector: The Independent Forest Monitoring Workshop*, and *The Global Financial Crisis and Tanzania (Effects and Policy Responses)*. Furthermore, ESRF has continued to build and strengthen the capacity for policy analysis among policy makers and other stakeholders through capacity building training covering various development issues.

Commissioned Studies

The Unit successfully initiated a total of 16 commissioned research projects in the year under review, 9 of which have been completed. These research projects were set within the different thematic areas as stipulated in our Fourth Strategic Plan 2008-2011.

Information Centre

The Centre continued to be responsible for library services, running websites for the Tanzania Online and Tanzania Development Gateway projects as well as coordinating Knowledge Management Systems, including the Foundation's websites. Moreover, in 2009 the Information Centre launched a new project called The Tanzania Knowledge Network (TAKNET) which provides a forum for exchanging and sharing information on various aspects of social and economic development. This project is supported by the United Nations Joint Programme on Capacity

Building for Development Management (UN/JP4).

Information Technology Unit (ITU)

The Information Technology Unit provides IT support to the Institution and other collaborating institutions and ESRF clients. In 2009 the Unit continued to maintain the IT infrastructure, including ESRF's Local Area Network (LAN) as well as external networks (websites). The IT Unit also supported the Research Department and Commissioned Studies Unit in data processing, analysis and storage.

Finance Unit

Despite the strain created by a reduced institutional funding in 2008, this year started with renewed commitment from our stakeholders. ESRF has managed to finalize negotiations and started to receive institutional support from The International Development Research Centre (IDRC) under The Think-Tank Initiative (TTI) programme, the Foundation for Civil Society (FCS) and Global Development Network (GDN). Our long standing partner the ACBF also agreed to finance salaries of selected research staff from May 2009. Furthermore, this report being the second in the implementation of the 2008-2011 Strategic Plan, it communicates the progress towards achieving annual objectives and the larger overall objectives of the strategic plan. Financial statements at the end of this report are provided with detailed financial records for 2009. A dedicated bank account for ESRF Endowment Fund created in 2008 is now operational. The foundation welcomes financial contribution from well-wishers to boost this fund.

NOTE FROM THE EXECUTIVE DIRECTOR




In 2009 the Foundation marked 16 years of its existence. A lot has been attained during these years that have made ESRF a valuable think-tank in the country. In this regard I would like to take this opportunity to thank all our key stakeholders who have been collaborating with us thus far in supporting the ESRF research agenda: The Government of Tanzania, development partners, the private sector, as well as representatives from civil society organizations. During 2009, the Foundation accomplished various key assignments commissioned by the Government of Tanzania, which include: A study on the Identification of Growth Drivers based on Tanzania's Comparative and Competitive Advantage; The Impact of Agricultural Interventions

in the Implementation of MKUKUTA and The Reduction of Poverty and Food Security; Policy Effectiveness in five selected key sector Study.

Furthermore, within the ESRF research unit 8 key research projects were concluded and 3 new research activities were initiated within our strategic plan framework. The newly launched research projects are: (i) Elimination of Non-Tariff Barriers (NTBs) in Trading within the East African Community. (ii) Strengthening Institutions' and Public Expenditure Management and Accountability (iii) Trade in Agriculture in the East African Community (EAC): *Implications on Food Security and Rural Livelihoods*.

During 2009 ESRF has also seen the establishment of an additional new unit to deal with Natural Resource Management in order to provide a special focus on this area as outlined in our national development policies and strategies i.e Tanzania Development Vision 2025 (TDV) and The National Strategy for Growth and Reduction of Poverty (NSGRP/MKUKUTA).

In an effort to enhance the social safety net of our staff, the Board of Trustees approved the establishment of a Social Welfare Fund (SWF). The SWF is guided by the constitution that was formulated and adopted by all staff members and guided by the registration protocols provided by the Ministry of Home Affairs. In addition ESRF has also finalized negotiations and started to receive institutional support from IDRC's the Think-Tank Initiative (TTI) programme; and the Foundation for Civil Society, among others. In marking the 16 years of excellence since its establishment, the mandate of ESRF continues to be valid as the need for research, capacity building, and policy dissemination for development management is still in great demand. It is our sincere hope that ESRF's contribution to the development process will remain valued and that our stakeholders will continue to collaborate with us in our efforts to fulfill our mission.



Dr. H. Bohela Lunogelo

INTRODUCTION

BACKGROUND

ESRF is an independent, non-governmental research institute registered in Tanzania with offices in Dar es Salaam. Its operations began in April 1994 in response to the need for the development of an institutional capacity for policy analysis. The foundation conducts policy-related research, capacity building programmes and policy dialogues that enhance the understanding of policy options within the government, the business community, the donor community, civil society and the growing private sector. It also undertakes demand-driven commissioned studies that conform to its mission.

VISION

The vision of ESRF is to become a national, regional and international centre of excellence in capacity development for policy analysis, development management and policy research by the year 2015.

MISSION

ESRF's mission is to build capacities in economic and social policy analysis and development management.

OBJECTIVES

The Foundation's objectives are to build and strengthen human and institutional capabilities in economic and social policy analysis and sustainable development management. ESRF also aims to enhance the understanding of policy options within the government, public sector, business sector, development partners, and in the growing non-governmental sector, mainly in Tanzania and the other East African countries.

STRATEGIC PLAN: 2008–2011

The current ESRF research agenda is being guided by its Medium Term Strategic Plan for 2008-2011. This strategy is the product of the institutional review that was conducted in the year 2007.

The Strategic Plan for 2008 – 2011 focuses on key thematic areas in line with the National Strategy for Growth and Reduction of Poverty (NSGRP). Under the research core programme the strategic plan focuses on the following main thematic themes and sub themes:

Theme I: Growth and Wealth Creation:

- Raising Productivity and Competitiveness of SMEs
- Business Promotion and Creation of a Competitive Environment
- Investment Climate for Business and Economic Growth
- Analysis of Growth Drivers
- Monitoring the Implementation of Vision 2025
- Tanzania Mini-Tiger Plan 2020
- National Natural Resources Management and Economics (Now elevated as a stand-alone Thematic Area No. V)

Theme II: Governance:

- Government Effectiveness on Aid Management and Service Delivery
- Citizen Scorecards on the Quality of Public and Independent Service Delivery
- Governance Issues and Private Sector Development

Theme III: Globalization and Regional Integration:

- Regional Trade and its Relationship with the Integration Trade System
- Harmonization of Economic, Finance and Investment Policies
- Monitoring Regional Economic Integration within the EAC

Theme IV: Social Services and the Quality of Life:

- Human Capabilities
- Youth and Children
- Gender Issues.

16 YEARS OF EXCELLENCE

In 2009 ESRF celebrated its achievements over the past 16 years of its existence. Since its inception a lot has evolved and made ESRF a valued think- tank in the country. To mark this special occasion, on 9th October 2009, the management and staff of ESRF invited key stakeholders and friends of ESRF to toast this achievement. In this 2009 annual report we welcome you to the synthesis of our evolution:



Our **Genesis**

ESRF was established from the need and demand for an improved understanding of policy options and development management issues in Tanzania. For the past 16 years ESRF has been addressing this gap by putting in place a favourable research environment for influencing sound socio-economic policies in the country.

Our **Humble Beginnings**



We began our Journey in a senior researcher's residential home in Tabata, we were then hosted by the Tanzania Commission for Science and Technology (COSTECH) and finally moved to 51 Uporoto Street on the Ursino Estate in Dar es Salaam, which became our permanent home. We look back at our journey and appreciate the hard work that has brought us thus far.

Our **Support System**



ESRF has emerged into a strong institution through on excellent network support system, which has been developed over the past 16 years. This includes the family of ESRF (present and former staff) and our collaborative partners within Tanzania, in the region, and worldwide.

Our **Stakeholders**

The continued support received from our key stakeholders has brought us to where we are today! Special thanks go to all our stakeholders to name a few: The Government of Tanzania (GoT), The African Capacity Building Foundation (ACBF), The International Development Research Centre (IDRC), the Foundation for Civil Society (FCS) Development Partners (e.g. UNDP, UNICEF, ODI, GDN, CUTS International), the private sector and civil society organizations (CSO's).

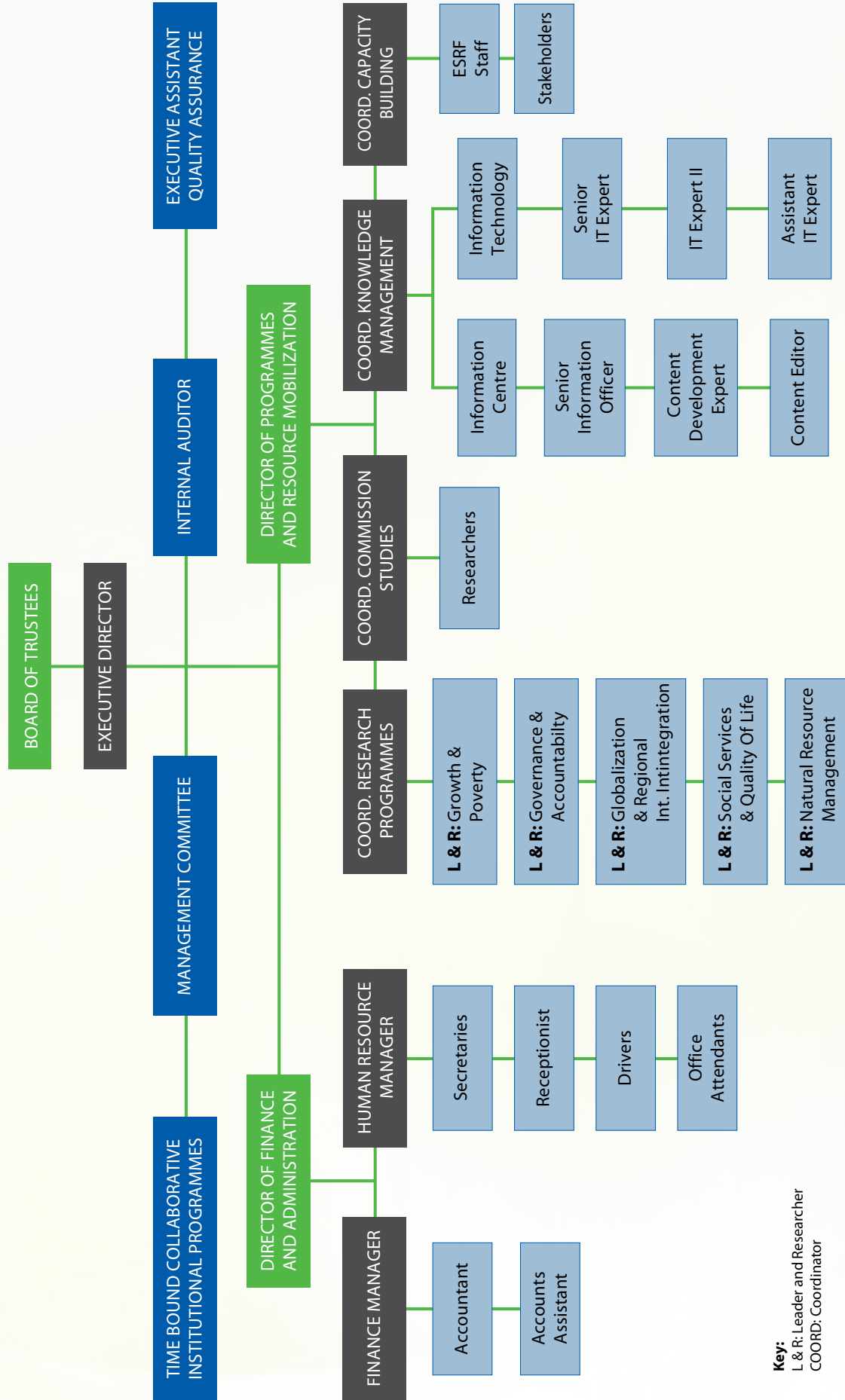
Our **Programmes**



The achievements attained in the past 16 years were made possible through well coordinated internal arrangements in our five key units: Research and Publications, Governance and Capacity Building, Knowledge and Information Management, Commissioned Studies and finally the newly established unit — Natural Resource Management.



ORGANIZATION STRUCTURE



Key:
 L & R: Leader and Researcher
 COORD: Coordinator



BOARD OF TRUSTEES

The Institutional Governance is under the Board of Trustees, as mandated by the constitution of the organization. The Board is composed of members from different, broadly recognized sectors of society: The government/public service, the private sector, civil society and academia. The Board also has a Sub-Committee that deals with finance and other ad hoc operational matters that require Board's approval. Board Members are appointed for a maximum of two terms of three years each. The current Board is composed of the following members:

- Ms. Ruth H. Mollel - Chairperson, Permanent Secretary – Vice President's Office.
- Prof. Andrew Temu - Vice Chair Person, Senior Lecturer – Sokoine University of Agriculture.
- Mr. Ramadhan Khijjah - Member, Deputy Permanent Secretary – Ministry of Finance and Economic Affairs.
- Dr. Enos Bukuku - Member, Deputy Governor - Bank of Tanzania.
- Dr. Charles Kimei - Member, Managing Director – CRDB Bank Limited
- Amb. Ami Mpungwe - Member, Chief Executive Officer – NAMITECH East African
- Ms. Usu Mallya - Member, Executive Director - TGNP
- Ms. Mary Mwingira - Member, Executive Director - TANGO
- Dr. Marcellina Chijoriga - Member, Dean – Faculty of Commerce and Management UDSM
- Prof. Sifuni Mchome - Member, Dean – Faculty of Law – UDSM.
- Dr. H. Bohela Lunogelo - Secretary, Executive Director ESRF

ESRF Management

The Management Team consists of the following members:

- Dr. H. Bohela Lunogelo - Executive Director
- Dr. Oswald Mashindano - Coordinator, Research and Publication
- Dr. Donatila Kaino - Coordinator, Governance and Capacity Building
- Ms. Pendo Mwandoro - Head of Finance
- Mellow Livoga - Head Human Resource
- Ms. Vivian Kazi - Coordinator, Commissioned Studies
- Mrs. Margareth Nzuki - Head, Information & Knowledge Management

1: Policy Research and Publication

RESEARCH UNDERTAKINGS

The research activities undertaken in 2009 are at the heart of the Foundation's four broad research agenda as identified in The Strategic Plan 2008 – 2011: Growth and Wealth Creation, Globalization and Regional Integration, Governance and Social Services and Quality of Life. The fifth thematic area on Natural Resource Management was added in 2009 after getting feedback from stakeholders.

The ESRF's policy research outputs provides important feedback towards the overall process of formulating and implementing policies and strategies for realizing the national goals as stipulated in Tanzania Development Vision (TDV) 2025 and National Strategy for Growth and Poverty Reduction (MKUKUTA). Additionally the research outputs are also used proactively in informing the regional economic and political integration process mainly through EAC, SADC and ACP/EU.

During 2009, ESRF undertook 10 research projects out of which 7 were completed as summarized below:

1. *The Role of the Mobile Phone in Sustainable Livelihoods*

This study analyzed the practical use of mobile phones and how they benefit the rural and urban poor, both through direct application to peoples' livelihoods and also through their role as enablers for empowerment, job creation and economic growth.

2. *Strengthening Micro-enterprises in Tanzania: Small Scale Non-Traditional Agricultural (horticulture) Products*

This study looked at how the Medium and Small Enterprises (MSEs) are integrated into value chains and thereafter the effects of this integration on both MSEs and corresponding value chains.

3. *Corporate Social Responsibility in Tanzania: The Case of the Mining Sector*

This study investigates the availability of development policies guiding investors' contribution to communities living within the areas of a project's influence.

It also assesses the extent at which mining companies have been participating in the overall implementation of the National Priority Policies of Poverty Reduction and the Improvement of People's Quality of Life.

4. *Convergence of COMESA-EAC-SADC (Tripartite Formation) Regional Frameworks*

This report brings out the progress towards achieving a tripartite formation for the three Eastern and Southern African regional blocks; COMESA, EAC and SADC.

5. *The Move Towards EU-EAC-EPA*

The report addresses the on-going regional negotiations for the Economic Partnership Agreement (EPA) with the European Union. The report explores the current situation as of October 2009.

6. *The East African Community (EAC): From Customs Union to a Common Market*

The report gives a brief overview and review of the East Africa's Customs Union Protocol and the move towards launching the EAC's Common Market. It outlines challenges and opportunities as well as strategic guidance on making the Common Market Protocol effective.

7. *Informal Sector Taxation in Tanzania*

The study addresses the challenges faced in an effort to tax the existing Informal Sector in Tanzania.

Three research projects are in different stages of implementation as outlined below:

- **Elimination of Non-Tariff Barriers (NTBs) in Trading within the East African Community:** This study is under the *Building an Inclusive East African Community (BIEAC)* project, in collaboration with The Consumer Utility and The Trust Society International (CUTS).
- **Strengthening Institution's and Public Expenditure Management and Accountability:** This is an on-going project in collaboration with the Global Development Network (GDN).
- **Trade in Agriculture in the East African Community (EAC): Implications on Food Security and Rural Livelihoods:** This study is under the second phase of the *Fostering Equity and Accountability in Trading Systems (FEATS)* project.

2: Commissioned Studies

The Unit continues to respond to demand driven studies with more tact and finesse. To ensure quality of work from the inception to completion, the Unit has established a formal criterion for the selection of studies for competitive bidding and firmed up its project management protocols. Currently the Unit is updating and scaling up its consultant database to increase the number of associate researchers and diversify the areas of expertise, which the institution can strategically pitch for to increase their presence in research in Tanzania and the region at large. To this effect a total of 15 projects were initiated in the year under review, 9 of which have been completed. These are set within the different thematic areas of research in the foundation as shown below:

1. A Feasibility Study On A Common Food Security Strategy In the East African Community (EAC); commissioned by The Kilimo Trust on behalf of the East African Legislative Assembly (EALA).
2. Evidence Based Development Network (EBPDN) —Africa Stewardship a project run in collaboration with The Overseas Development Institute (ODI).
3. A Pilot Project on Supporting an Affordable Electronic Remittance Transfer System between Uganda and Tanzania; commissioned by The International Organization for Migration (IOM) and the Universal Postal Union (UPU).
4. Petroleum Exploration In Tanzania: A Baseline Survey; commissioned by The Norwegian People's Aid (NPA).
5. The Impact of Agricultural Interventions in the Implementation of MKUKUTA and the Reduction of Poverty and Food Security. A study commissioned by The Ministry of Agriculture Food Security and Cooperatives (MoAFSC).
6. Secondary Data Collection for the Evaluation of the Comprehensive Africa Agriculture Development Program (CAADP) in Tanzania; commissioned by The Ministry of Agriculture Food Security and Cooperatives (MoAFSC).
7. Data Collection for The Study on Trade Relations between Ethiopia, Sudan and The EAC; commissioned by Friedrich-Ebert-Stiftung (FES) in Dar es Salaam.
8. The African Economic Outlook — Tanzania Report; commissioned by The African Development Bank (AfDB)

9. An Assessment of Recent Trends to the Extent of Use of Expatriate Technical Experts in Selected Sub Saharan Countries — Tanzanian Case Study; commissioned by The Africa Capacity Building Foundation (ACBF)
10. A Study on the Identification of Growth Drivers Based on Tanzania's Competitive and Comparative Advantages; commissioned by The President's Office; Planning Commission
11. The Global Financial Crisis in Tanzania; Effects and Policy Responses; commissioned by Overseas Development Institute (ODI)
12. Evidence Based Development Network (EBPDN) an Institutional Study Tour (Uganda and Kenya); commissioned by The Overseas Development Institute (ODI)
13. Socio-economic study on the BIOEARN Project; commissioned by The Tanzania Commission for Science and Technology (COSTECH)
14. Policy Effectiveness Study for five Ministries; Commissioned by The Ministry of Public Service Management.
15. Knowledge Translation in Tanzania; commissioned by The Overseas Development Institute (ODI)

3: Capacity Strengthening For Policy Research Analysis

Introduction

To fulfill its mandate ESRF has continued to be a participatory knowledge sharing platform. Knowledge is generated from a number of studies undertaken by its Research and Publication Unit. This knowledge is widely shared and discussed with our stakeholders including policy makers, through a number of policy dialogue sessions intending to influence policy making processes. Furthermore ESRF has continued to build and strengthen the capacity for policy analysis among policy makers and other stakeholders through capacity building training covering various governance issues including accountability and good governance.

Policy Dialogue Seminars:

For the purpose of sharing ESRF generated knowledge and influencing policy makers, the Foundation in the year 2009 conducted the following policy dialogue sessions:

i. The Role of Mobile Phones on Sustainable Livelihoods:

Mobile phone technology as part of ICT development is believed to bring social and economic development within many countries in the world, including Tanzania. Based upon findings from The African Capacity Building Foundation (ACBF) funded study, a policy dialogue was conducted with a number of stakeholders to discuss the impact of mobile phones on socio-economic development in Tanzania. According to the session, it was revealed that despite the technology capability to bring socio-economic changes in society, it has not yet been utilized effectively by Tanzanians and there are still many barriers relating to users and service providers that hinder the full realization of the technology potential towards development.



Mr. Abdallah Hassan, Senior Information Officer - ESRF, presenting a paper on The Role of Mobile Phones on Sustainable Livelihoods, during the workshop held at the ESRF Conference Hall.

ii. Corporate Social Responsibility in Tanzania: The Case of Mining Sector.

This dialogue is aimed at informing the public about the level of Corporate Social Responsibility (CSR) policy implementation in the Tanzanian mining sector. The policy aims to make corporations responsible for the development of communities surrounding their operations.

Based upon the ACBF funded study, public awareness and understanding of the CSR is still at a low level and according to dialogue participants, this is contributed to by the lack of transparency and lack of adequate education campaigns about issues relating to CSR, especially in the Mining sector. The discussion calls for a proper monitoring mechanism on companies' activities and a clear and explicit mining policy which explains roles and responsibilities in implementing the CSR.

iii. The Independent Forest Monitoring Workshop:

This workshop was conducted and commissioned in collaboration with *The World Wildlife Fund, Tanzania Programme Office (WWF-TPO)*. The dialogue is aimed at informing people about the contribution of The Independent Forest Monitoring Project (IFMP) under WWF and its importance in Tanzania.

A proposal for the IFMP in Tanzania was presented showing the necessity of having this implemented in the country. According to WWF-TPO, despite its unique forest environment, Tanzania is facing large scale deforestation and illegal logging, therefore the country would benefit by adopting this relatively unique project.

iv. Global Financial Crisis and Tanzania Workshop (Effects and Policy Responses).

ESRF in collaboration with The Overseas Development Institute (ODI) conducted the Global Financial Crisis workshop which discussed the impact of the global financial crisis and its impact on Tanzania and the government's response.

Based upon a collaborative study done by ESRF and ODI senior researchers, the dialogue session participants discussed with ESRF stakeholders, from the public and private sectors, the extent to which the crisis has affected Tanzania. The discussion also covered how the financial and trade sectors have been affected, and the way the Tanzanian government responded at policy level. A similar workshop was conducted in Nairobi where experience by the EAC countries was shared.

Training

In building capacity for policy analysis and management, ESRF in collaboration with the Ministry of Health and Social Welfare (MoHSW) conducted training on *Financial Reports and Medium Term Expenditure Frameworks (MTEF), Budget Analysis* to ministerial directors, assistant directors and other officials. The training was aimed at building capacity and enhanced actors' understanding in issues related to national policies, strategic plans and budgets.

Specifically it focused on linking policy, strategic planning and the MTEF budget as applied by the MOHSW. The training session was declared open by Dr. Mliga on behalf of the Permanent Secretary, MOHSW. Training resource persons included: Dr. H. Bohela Lunogelo, ESRF Executive

Director, Dr. Oswald Mashindano and Dr. Donatilla Kaino ESRF and Mr. Itemba.

Among the modules taught included: The Planning and Budget Planning Process in Tanzania, The MTEF and the Public Expenditure Review System (PER), The National Budget Process, Financial Management as well as the link between Policy, Strategic Planning and The Budget.

Furthermore, as part of capacity building, ESRF, under The Christian Michelsen Institute (CMI) staff exchange programme, accommodated four visitors from CMI, Norway; BIDPA, Botswana and IPAR, Kenya in lieu of two ESRF staff: Ms Nzuki and Mr. Mbilinyi who went to CMI and later on to NEPRU and BIDPA, respectively. Lastly, the Foundation managed to accommodate a total of 11 students from universities of Dar es Salaam, Tumaini, Mzumbe etc. under the practical internship.



Ms. Stina Petersen and Mr. Rune Espelad receiving a farewell card from the Executive Director of ESRF, Dr. H. B. Lunogelo, after the completion of a 6-month stay at ESRF through the CMI staff exchange programme.

4: Knowledge Management, Dissemination and Policy Voice/Influence

There is a general consensus and appeal from various groups of people that researches should generate results, and thus stakeholders must have access to these results and be able to put them into use. In recognition of this, ESRF, during the year 2009, considered several ways in order to ensure that there exists an adequate link between research and policy. ESRF encouraged its stakeholders such as CSOs, public and private sectors to use the various research outputs meaningfully as instrumental to influencing policy and decision making.

The Information Centre continued to support and facilitate research generation, dissemination and sharing, by providing relevant and up to date literature. Also the centre became the hub of knowledge and information generated in-house and that which is generated by other collaborating institutions. ESRF continued to host the Tanzania Online Gateway, and the Tanzania Development Gateway, these initiatives are aimed at knowledge and information management and sharing. In 2009 the Information Centre launched a new project called The Tanzania Knowledge Network (TAKNET).

Information Management

ESRF through its Knowledge Management Unit hosts several knowledge and information management initiatives. Among them is the library which provides support and facilitates research and consultancy work through the provision of relevant and current data and literature. The library is fully automated thus its services can be accessed via the World Wide Web (www.esrf.or.tz). The library has established a relationship with several library and information initiatives worldwide. This relationship enables ESRF to easily disseminate its research findings to the public. Collaborating institutions include INASP, through its programme for Enhancement of Research Information (PERI), which provides online documentation from different institutions: The British Library for Development Studies (BLDS) and the Institute of Development Studies at Sussex University which shares information and knowledge, as well as expertise through the ELDIS project.



Tanzania Online continued to provide its stakeholders with current information about development issues. By December 2009 the number of subscribers for the monthly list of new publications reached above 35,000, while the website registers an average of 30,000 users every day. To reach a wider audience, in 2009, much effort was put into the marketing and promotion of TzOnline services. TzOnline participated in the Civil Society Exhibition (CSE) involving parliamentarians in Dodoma. Promotional materials are produced and distributed to institutions and individuals countrywide.

Tanzania Knowledge Network (TAKNET)



In January 2009, ESRF in collaboration with the United Nations Joint Programme on Capacity Building for Development Management (JP4) and The Government of Tanzania, launched a new initiative called The Tanzania Knowledge Network (TAKNET). The network provides a facility for exchange and sharing of information on various aspects of social and economic development.

TAKNET serves as a tool for generating more discussions of greater depth concerning pressing development issues and promotion of the sharing of experiences and research, thereby promoting effective utilization of knowledge for managing the development of the country. Since its launch more than 14 topics have been discussed, moderated and synthesized. Summaries of closed topics can be accessed on line through TAKNET website (www.taknet.or.tz), hardcopies are also available at ESRF upon request.

Tanzania Development Gateway



The Tanzania Development Gateway continued to perform its role that included the dissemination and exchange of knowledge and information about development issues. However, the project faced a shortage of funding that necessitated the postponement of most of its activities. During the year a total of 106 articles, reports, presentations, and links were uploaded onto the Gateway databases. To date there are about 7,000 online documents and the portal registers an average of 5,200 users every day. Well-wishers are invited to provide funds for supporting this important initiative so that it can provide its intended services to the general public.

5. Hosted National, Regional and International Programmes & Networks

The foundation prides itself in its capacity to reach out to many countries for research, dissemination of knowledge and capacity building through the social capital that it has invested in the last 16 years. We continue to build strong relationships with our local and international networks in an advisory and research capacity.

I. OUR STRATEGIC NETWORK PARTNERS:

i. *Evidence Based Policy in Development Network (EBPDN) Africa*

EBPDN-Africa is part of EBPDN-Global which was established in 2006 by the ODI through the Research and Policy in Development Programme (RAPID). The EBPDN - Africa Network was established in 2007 after the collective ideas from the African Institutional members of EBPDN-Global, from the need to establish their own regional network for African research institutions and think-tanks that can take the lead using evidence based research in informing policy. Other regional networks that were born by EBPDN global are: EBPDN-Latin America and EBPDN-South East Asia. In 2009 the following activities were carried out:

- a. *A total of 80 individuals from different institutions joined the network. The secretariat is in the process of opening online discussions on evidence based research and its impact on policy change in Africa.*
- b. *A study tour targeted at ensuring sustainability of the EBPDN's stewardship in Africa, through focused research and commitment, was conducted in Uganda's Economic Policy Research Centre – EPRC and Kenya's Institute for Policy Analysis and Research – IPAR. ESRF is looking forward to signing the Memorandum of Understanding with these institutions in 2010.*

ii. *Southern and Eastern Africa Policy Research Network (SEAPREN)*

SEAPREN is a research network comprised of 5 policy research institutions in southern and eastern Africa. They include: ESRF - Tanzania, The Institute of Policy Analysis & Research (IPAR) Kenya, The Economic Policy Research Centre (EPRC) Uganda, The Botswana Institute for Development Policy Analysis (BIDPA) Botswana, and The NEPRU in Namibia. The network is currently facing financial constraints. Donors are invited to support it. Kindly send suggestions to ed@esrf.or.tz.

iii. *Formative Process Research on Integration in Southern Africa Network (FOPRISA)*

The FOPRISA network was established on 1st of May 2005 with the aim of assisting the SADC secretariat in strengthening integration within the southern Africa region. This network consists of research institutions from all SADC member countries, with Tanzania being one of them. ESRF was chosen to be the research partner in this network.

The working themes in this network include: 1) Democracy, Poverty Reduction and Development; 2) Politics, Diplomacy, Defense, Safety and Security; 3) Trade and Regional Integration; 4) Economic Harmonization, Finance and Investment; 5) Climate Change and

the Environment; 6) Capacity Development; and On-demand Policy Studies. ESRF is leading the fourth theme; Economic Harmonization, Finance and Investment. Through this initiative, the foundation has published a book *towards promoting investments in the Southern African Development Community (SADC)*.

II. HOSTED PROGRAMMES

i. Ford Foundation International Fellowships Program (IFP Tanzania)



In accomplishing the planned activities, IFP successfully implemented the following in 2009:

- Announced the eighth selection round for the 2010/2011 academic year – through the media, which had national and regional coverage in Tanzania and Zanzibar. Furthermore, IFP distributed information in different universities e.g. The State University of Zanzibar, ANGOZA an Umbrella NGO in Zanzibar, and through The Ministry of Women, Children, Gender and Youth Development.
- Recruited and selected candidates for master's degrees – A total of 15 master's fellows were selected and endorsed for the IFP award for the 2010/2011 academic year.
- Trained communication skills, research methodology and a computer course; 17 fellows were selected for the academic year 2009/2010.
- Hosted the Joint East Africa Pre-departure Meeting for the seventh cohort from Kenya, Tanzania, and Uganda.
- Facilitated travel arrangements for 15 Masters and 2 PhD fellows to join Universities in the USA, UK and the Netherlands for the academic year 2009/2010.
- Conducted a needs assessment for the eighth cohort.
- Continued with its outreach and information dissemination activities, which included participation in outreach work in Zanzibar and Mainland Tanzania during the period in collaboration with NGOs and IFP Fellows, alumni and staff.
- Liaison with placement partners (PP) – the programme continued to work very closely with the placement partners, the British Council in the UK, NUFFIC in the Netherlands and The Institute of International Education in New York.
- Alumni activities: IFP Tanzania continued to work very closely with the IFP Tanzania Alumni Association to compile Tanzania's Alumni Directory. The layout and design of the book was finalized along with editing and re-reading stories for the production of the Tanzania Alumni

Directory. The Alumni Directory is scheduled to be launched on 8th December 2009.

- Announced the selection of the ninth round for the 2011/2011/2012 academic year.

ii. Post Graduate Diploma in Poverty Analysis

TANZANIA POST-GRADUATE DIPLOMA PROGRAMME IN POVERTY ANALYSIS



ESRF/REPOA/ISS POST-GRADUATE DIPLOMA IN POVERTY ANALYSIS

The Postgraduate Diploma in Poverty is a one- year programme of international standard with specific emphasis on imparting investigative skills and research capabilities for applied policy analysis. Its substantive focus concerns the study of issues of poverty, vulnerability and social protection. The programme is policy oriented, skills-intensive and interdisciplinary in nature. This programme is jointly delivered and managed by the three institutions: The Economic and Social Research Foundation (ESRF); Research on Poverty Alleviation (REPOA) and The International Institute of Social Studies (ISS) of the Erasmus University, Rotterdam.



Group Picture of the PGD students fourth intake during their second workshop at the ESRF Conference Hall in 2009.



During the first half of the year (January – June 2009) the activities of the programme centered on the delivery of the second semester course to the students of the fourth intake (2008/2009). The following key activities were accomplished:

- The second intensive workshop on the Conceptualization of Poverty and Research Methodology was conducted from 12th – 17th January 2009 at the ESRF Conference Hall. Resource persons for this workshop included Professor Marc Wuyts (Convener of the PGD Programme), Dr. Bridget O’Laughlin (ISS), Mr. Donald Mmari (REPOA), Dr. Tausi Kida (ESRF/Coordinator PGD Programme), Dr. Beatrice Mkenda (UDSM), Dr. Flora Kessy (IHI) and Dr. Donatilla Kaino (ESRF).
- 9 units on diversified policy issues were delivered during this period. These were: *The Relation between ‘Economic’ and ‘Social’ Policy in Poverty Reduction: Duality or Unity?; Context-Specific Poverty Reduction Strategies: The Productivity-Employment Nexus; Trade Policy and Poverty Reduction; Redistribution and Healthcare; Free Primary Education: Are We Postponing Exclusion?; Policy on Poverty in Tanzania: A Historical Perspective; The Poor, their Money and their Debts; and Social Protection. Students were also given time to work on strengthening their research proposals and therefore moving towards a research work-in-progress stage.*
- The third intensive workshop on *Policy Analysis for Poverty Reduction* was conducted from 25th to 30th May 2009 at the REPOA conference hall. Resource persons for this workshop included Dr. Cyprian Mpemba (PMO-RALG), Dr. Tausi Kida (ESRF/Coordinator PGD Programme), Dr. Beatrice Mkenda (UDSM), Dr. Flora Kessy (IHI), Dr. Donatilla Kaino (ESRF), Dr. Eliab Luvanda (ERB), Dr. Michael Ndanshau (UDSM) and Dr. Oswald Mashindano (ESRF).
- The fourth intake of students submitted their final research papers on 15th June 2009, which marked the end of the course delivery. The students had been working on research papers in four main thematic areas: (i) Social Protection and Social Service Provision, (ii) Growth, Poverty and Rural Development, (iii) Gender and Social Development and (iv) Microfinance and Poverty.
- Besides the course delivery activities, in May 2009 the programme started preparations for the applications of the fifth intake (2009/2010). The application for this intake was announced in the local newspapers and a total of 387 applications were received by the end of June 2009.

During the second half of the year (July – December 2009) the following key activities were conducted:

- Organization of the graduation ceremony for the fourth intake on 29th August 2009 at the White Sands Hotel at which a total of 26 students graduated.
- Finalization of the selection process for the fifth intake (2009/2010) whereby 27 candidates were selected: 10 from central government, 3 from local government, 8 from academic and research institutions, and 6 from international and local NGOs.
- First introductory workshop for the fifth intake (2009/2010) was held on The Conceptualization of Poverty. The workshop was conducted from 24th to 29th August



2009 at the ESRF Conference Hall. Resource persons for this workshop included: Prof. Marc Wuyts (ISS – The Hague, The Netherlands), Prof. Bridget O’laughlin (ISS), Dr. Tausi Kida (ESRF), Dr. Donatilla Kaino (ESRF), Dr. Flora Kessy (IHI) and Dr. Beatrice Mkenda (UDSM).

- The first phase of distance learning for the fifth intake was successfully conducted from 1st September 2009 to 20th November 2009. A total of 8 units of the foundation course were delivered, namely: *“Sorting Out”, Conceptions of Poverty; Economic growth, Inequality and Poverty; Trade Integration, Economic Growth and Poverty: Tanzania in the Global Economy; How Poverty Works?: Gender and the Market Divide; Vulnerability, Security and Impoverishment; Poverty and the Quality of Life: Capabilities and Livelihoods; Social Inequality, Redistribution and the ‘New’ Politics of Inclusion; and Does Population Growth Matter? The Poor and Food in Economic Development.*
- Lastly, the programme finalized a proposal on a short term tailor- made training course on Poverty Analysis to be submitted to UNICEF. The short term training is targeted at district level and focuses on three key issues: Social Protection; Participatory Budgeting; and Child Poverty and Disparities.



Ms. Emmy Metta, a research scientist from IHI, receiving flowers from the guest of honour in recognition of best research paper.

RESEARCH INFRASTRUCTURE

Information Technology Unit

ESRF successfully maintained its existing databases and systems and also managed to establish new ones. One of the new systems developed in 2009 included the Online Payment Approval System.

The Unit also continued to provide support to the research department especially in the data analysis stage. During the period under review it has managed to analyse the FINSCOPE dataset which has captured information about the financial sector in Tanzania.

In an attempt to improve the quality of our research products, ESRF has acquired and put in place data capture and data analysis tools. A total of 4 desktop computers and 1 server were added to the IT infrastructure.

Furthermore, by the end of the year 2009, ESRF hosted a total of 43 websites and online portals including: The Tanzania National Website (www.tanzania.go.tz), the website of the Ministry of Education and Vocational Training (www.moe.go.tz), The National Book Development Council (www.bamvita.or.tz), The National Examination Council (www.necta.go.tz) and various other public and private institutions.

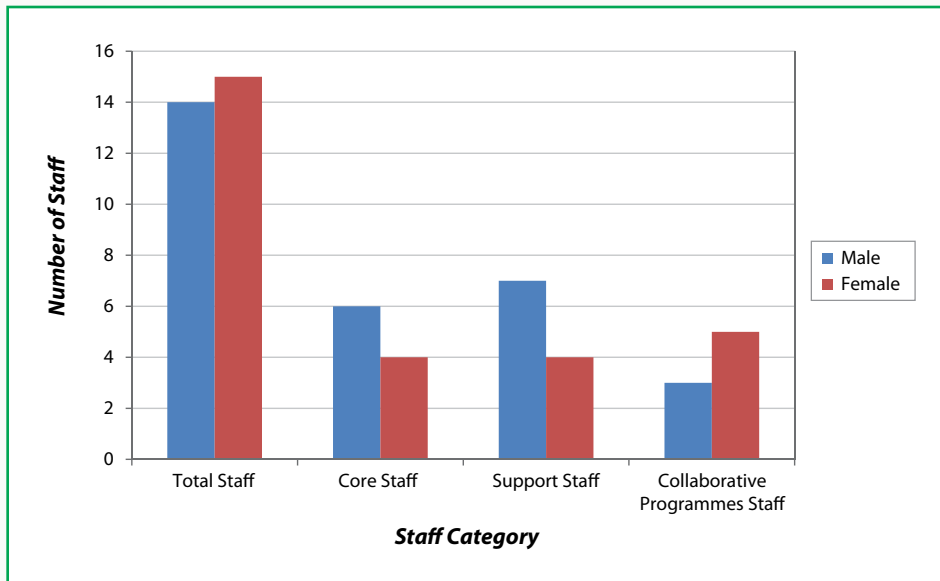
Human Resources

The Human Resources Unit is a key pillar of the foundation as it ensures the right combination of manpower and has systems in place to enable smooth operations. This is done by devising human resource' plans, policies, guidelines, procedures, industrial relations and development strategies that are implemented fairly, equitably and harmoniously.

The unit also ensures the working environment is conducive for staff to unleash their utmost productivity.

During the year 2009 the Unit undertook various activities involving staff recruitment, procurement of goods and services, identification of training needs, record keeping of staff / management /board meetings, arranging institutional visits and the establishment of HR and a performance-based management system.

ESRF STAFF DISTRIBUTION 2009



Staff Category

By the end of 2009 ESRF had a total of 29 personnel including staff under collaborative programmes. During January to December 2009, 4 new staff members were recruited. They include: Mr. Raphael Chibindu (Office Management Secretary); Mr. Francis E. J. Kaaya, (Driver); Ms. Aldegunda Ngowi (Accountant) and Mr. Yasser Manu who joined as Course Administrator for the PGD Programme.

During the reported period 5 staff members exited from ESRF. 4 of them completed their contracts while the remaining employee secured another job. They include: Mr. Richard Kesanta (Driver); Ms. Violet Isaack (Receptionist); Pendo Mwandoro (Finance Manager); Ms Femida Patwa (PGD Course Administrator) and Mr Deus Kibamba (Head of the Governance and Capacity Building Unit) who left ESRF for an appointment in Harare, Zimbabwe.



FINANCIAL REPORT 2009

FINANCIAL POSITION AS AT 31ST DECEMBER, 2009

NON CURRENT ASSETS	NOTE	31.12.2009 USD	31.12.2008 USD
Property, Plant and Equipment	2	488,045	527,585
CURRENT ASSETS			
Accounts Receivable & Prepayments	3	73,865	114,990
Cash and Bank Balances	4	<u>349,184</u>	<u>29,459</u>
TOTAL CURRENT ASSETS		<u>423,049</u>	<u>144,449</u>
TOTAL ASSETS		<u>911,094</u>	<u>672,034</u>
EQUITY AND LIABILITIES			
GRANTS AND RESERVES			
Capital Grants		1,059,699	1,051,999
Capital Reserve		30,000	30,000
Accumulated Deficit		(1,000,268)	(906,015)
Deferred Revenue Grants	5	<u>74,948</u>	<u>100,000</u>
TOTAL GRANTS & RESERVES		<u>164,379</u>	<u>275,984</u>
CURRENT LIABILITIES			
Accounts Payable and Accruals	6	<u>746,715</u>	<u>396,050</u>
TOTAL CURRENT LIABILITIES		<u>746,715</u>	<u>396,050</u>
TOTAL EQUITY AND LIABILITIES		<u>911,094</u>	<u>672,034</u>

NOTES 1 TO 19 FORM PART OF THESE FINANCIAL STATEMENTS



CHAIRPERSON



BOARD MEMBER

DATE 31 May 2010



STATEMENT OF CHANGES IN EQUITY AND ACCUMULATED DEFICIT
FOR THE FINANCIAL YEAR ENDED
31ST DECEMBER, 2009

Particulars	Capital Grants USD	Capital Reserve USD	Deferred Income USD	Accumulated Surplus/ (Deficit) USD	Total USD
As At 31.12.2008	1,051,999	30,000	100,000	(906,015)	275,984
As At 1.1.2009	1,051,999	30,000	100,000	(906,015)	275,984
Additions/Adjustments	7,700		(25,052)	(95,508)	(112,860)
Surplus/(Deficit) for the year	-	-	-	1,255	1,255
As At 31.12.2009	<u>1,059,699</u>	<u>30,000</u>	<u>74,948</u>	<u>(1,000,268)</u>	<u>164,379</u>

NOTES 1 TO 19 FORM PART OF THESE FINANCIAL STATEMENTS


CHAIRPERSON


BOARD MEMBER

DATE 31 May 2010.



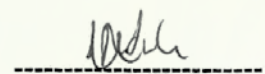
**STATEMENT OF CHANGES IN FINANCIAL POSITION FOR THE YEAR ENDED
31ST DECEMBER, 2009**

	31.12.2009	31.12.2008
	USD	USD
CASH FLOW / (OUTFLOW) FROM OPERATING ACTIVITIES		
Surplus/(Deficit) for the Year	1,255	(204,414)
Adjustments for Non-Cash Items: -		
- Depreciation	36,248	47,035
- Adjustment for Under-depreciation of Assets	13,558	-
- Adjustment to Accumulated Fund	<u>(95,508)</u>	<u>(5,558)</u>
CASH INFLOWS/(OUTFLOWS) BEFORE WORKING CAPITAL CHANGES	<u>(44,447)</u>	<u>(162,937)</u>
MOVEMENT IN WORKING CAPITAL		
(Increase)/ Decrease in Accounts Receivables and Prepayments	41,125	54,603
Increase / (Decrease) in Accounts Payable and Accruals	<u>350,665</u>	<u>166,799</u>
TOTAL CHANGES IN WORKING CAPITAL	<u>391,790</u>	<u>221,402</u>
TOTAL CASH INFLOWS/(OUTFLOWS) FROM OPERATING ACTIVITIES (A)	<u>347,343</u>	<u>58,465</u>
CASH FLOWS/(OUTFLOWS) FROM/(TO) INVESTING ACTIVITIES		
Purchase of Property, Plant and Equipment (B)	<u>(10,266)</u>	<u>(7,950)</u>
CASH FLOWS/(OUTFLOWS) FROM FINANCING ACTIVITIES		
Deferred Income	(25,052)	(120,570)
Capital Grants	7,700	-
TOTAL A + B+C	<u>319,725</u>	<u>(70,055)</u>
CASH AND CASH EQUIVALENTS AT THE BEGINNING OF THE YEAR	<u>29,459</u>	<u>99,514</u>
CASH AND CASH EQUIVALENTS AS AT DECEMBER	<u>349,184</u>	<u>29,459</u>

NOTES 1 TO 19 FORM PART OF THESE FINANCIAL STATEMENTS



CHAIRPERSON



BOARD MEMBER

DATE 31 May 2010





REPORT OF THE AUDITORS TO THE TRUSTEES OF ECONOMIC AND SOCIAL RESEARCH FOUNDATION

We have examined the financial statements of the Economic and Social Research Foundation (ESRF) for the year ended 31st December, 2009 as set out on pages 5 to 16. The financial statements are in agreement with the accounting records and we obtained all the information and explanations we considered necessary for the audit.

Respective Responsibilities of Directors and Auditors

The Board of Trustees of the Foundation is responsible for the preparation of financial statements. It is our responsibility to express an independent opinion based on our audit of those statements and report our opinion to you.

Basis of Opinion

Our audit included examination on a test check basis, of evidence relevant to the amounts and disclosures in the financial statements. It also included an assessment of the significant estimates and judgements made by the management of the Foundation in the preparation of the financial statements, and whether the accounting policies applied are appropriate to the Foundation's circumstances, consistently applied and adequately disclosed.

We planned and performed our audit so as to obtain all the information and explanations, which we considered necessary in order to provide us with sufficient evidence to give reasonable assurance that the financial statements were free from material misstatement. In forming our opinion, we also evaluated the overall adequacy of the presentation of information in the financial statements.

Opinion

In our opinion, the accompanying financial statements present fairly the financial position of the Economic and Social Research Foundation as at 31st December, 2009 and the deficit and cash flows for the year ended on that date, in accordance with International Financial Reporting Standards and in compliance with the Constitution of the Foundation.

**GLOBE ACCOUNTANCY SERVICES
CHARTERED CERTIFIED PUBLIC ACCOUNTANTS**

**Method A. Kashonda – FCCA, FCPA(T), MBA
SENIOR PARTNER**

DAR ES SALAAM

DATE: 02/06/2010

PUBLICATIONS

List of publications

General Publications

- 1 Trade, Development and Poverty: The Case of the Textile Industry, by Josaphat Kweka and George Kabelwa (2006).
- 2 Trade, Development and Poverty: The Case of the Fishery Industry, by Josaphat Kweka and George Kabelwa (2006).
- 3 Measuring the Impact of HIV/AIDS on the Electoral Process in Tanzania, by Flora Kessy, Ernest Mallya and Oswald Mashindano (2006).
- 4 Tracking HIV and AIDS Resources in Tanzania, by Flora Kessy and Oswald Mashindano (2006).
- 5 Cool and Hard Heads; Warm and Soft Hearts: Economic Reforms for a Just Society in Tanzania: A Synthesis Paper of the Inaugural Tanzanian Development Forum. July 2005.
- 6 Moving Out of Poverty, by Flora Kessy, Oswald Mashindano, Dennis Rweyemamu and Prosper Charle (2005).
- 7 A Review of the Budgetary Process and Economic Governance in Tanzania, by S. Tax and D. Ngowi (2004).
- 8 Managing and Regulating Mixed Health Care Systems: A Tanzanian Case Study Pricing and Competition in the Mbeya Health Care Market - ESRF Discussion Paper No. 27. By Paula Tibandebage and Maureen Mackintosh. Printed in 2002.
- 9 Managing and Regulating Mixed Health Care Systems: A Tanzanian Case Study Access, Exclusion and Information on Quality of Care in the Mbeya Health Care Market.- ESRF Discussion Paper No. 28. By Paula Tibandebage and Maureen Mackintosh. Printed in 2002.
- 10 Managing and Regulating Mixed Health Care Systems: A Tanzanian Case Study Health Care Facilities Finance and Strategy: Dar es Salaam, Mbeya and Coast Region - ESRF Discussion Paper No. 29. By Maureen Mackintosh and Paula Tibandebage. Printed in 2002.
- 11 Managing and Regulating Mixed Health Care Systems: A Tanzanian Case Study Access, Exclusion and Quality of Care in the Dar es Salaam and Coast Regions Health Care Markets- ESRF Discussion Paper No. 30. By Paula Tibandebage and Maureen Mackintosh. Printed in 2002.

- 12 A study on Pooling of Technical Assistance in the Context of Sector – Wide Approaches: The Case of Uganda.- ESRF Discussion Paper No. 31. By: Prof. Samuel M. Wangwe and George Kasumba. Printed in June 2002.
- 13 Pooling of Technical Assistance in the Context of Sector – Wide Approaches in Tanzania - Discussion Paper No. 32. By: Prof. Samuel M. Wangwe and Ms Lorah Madete. Printed in June 2002.
- 14 Private Sector Development: The Case of Private Health Facilities - ESRF Discussion Paper No. 26. By Paula Tibandebage, Haji H. Semboja, Phares Mujinja and Henock Ngonyani. Printed in 2001.
- 15 Building Capacity in the Government Economic Service - ESRF Discussion Paper No. 25. By Brian van Arkadie, Nicholas Monck, Nestor Rweyemamu, Ted Valentine, Jeremia Makindara and Margaret Manyanda. Printed in 2000.

TANZANIA ECONOMIC SERIES:

- 1 **Series 4:** *NEPAD at Country Level – Changing Aid Relationships in Tanzania.* Edited by: Prof. Samuel M. Wangwe, 2002.
- 2 **Series 3:** *Partnership for Capacity Building in Africa – National Capacity Assessment in Tanzania.* Edited by: Prof. Samuel M. Wangwe, 2002.
- 3 **Series 2:** *Overcoming Constraints on Tanzanian Growth: Policy Challenges Facing the Third Phase Government, 2000.*
- 4 **Series 1:** *Transitional Economic Policy and Policy Options in Tanzania. Tanzania Political Economy Series 1 / Wangwe, Samuel M.; Semboja, Haji H.; Tibandebage, Paula. / Economic and Social Research Foundation (ESRF). -- Dar es Salaam: ESRF, 1998.*

QUARTERLY ECONOMIC REVIEW (QER)

QER Volume 9 Issue 4: October – December 2009

QER Volume 9 Issue 3: July – September 2009

QER Volume 9 Issue 2: April – June 2009

QER Volume 9 Issue 1: January – March 2009

ANNUAL REPORTS

1. ESRF Annual Report, 2008
2. ESRF Annual Report, 2007
3. ESRF Annual Report, 2006
4. ESRF Annual Report, 2005

WORKING PAPER SERIES (GLOBALIZATION) SERIES:

1. **The Impact of Globalization on the Labour Market: A Case Study of Tanzania.** Working Paper Series No. 18. Beatrice Kalinda Mkenda. September 2006.
2. **Capital Markets: The Case of Tanzania.** Working Paper Series No. 19. Allan Syril Mlulla. October 2006.
3. **Globalization and Rural Household Welfare in Tanzania.** Working Paper Series No. 15. Beatrice Kalinda Mkenda. August 2005.
4. **Agricultural Marketing and Supply Chain Management in Tanzania: A Case Study.** Working Paper Series No. 16. Elina Eskola 2005.
5. **Analysis of Factors Hindering FDI Flow into the Agricultural Sector in Tanzania.** Working Paper Series No. 17. David A. Nyange. 2005.
6. **Determinants of FDI Inflows to African Countries: A Panel Data Analysis.** Working Paper Series No. 11. Beatrice K. Mkenda and Adolf F. Mkenda April 2004.
7. **Ten Years After Liberalizing Petroleum Marketing in East Africa: Is the Playing Field Still Tilted Against National Entrepreneurs?** Working Paper Series No. 12 Timothy Ranja September 2003.
8. **Patterns, Policy and Legal Issues on International Labour Migration in Tanzania.** Working Paper Series No. 13 Umyy Ally Mwalimu April 2004.
9. **Economic Reform in Tanzania and Vietnam: A Comparative Commentary.** Working Paper Series No. 14. Brian Van Arkadie and Do Duc Dinh. April 2004.
10. **Good Governance Markets and Donors.** Working Paper Series No. 02. By Prof. Brian van Arkadie Printed in July 2003.
11. **Vietnam's Economy: Renovation and Integration** Working Paper Series No. 03. By Dr. Do Duc Dinh. Printed in July 2003.
12. **The Implication of the WTO Agreement on Trade-Related Aspects of Intellectual Property Rights (TRIPS) in Tanzania: A Focus on Pharmaceuticals.** Working Paper Series No. 04. By Umyy Ally Mwalimu. Printed in July 2003.
13. **South African FDI in East Africa: The Case of Tanzania.** Working Paper Series No. 05. By George Michael Kabelwa. Printed in September 2003.
14. **Industrialization: The Key to Development in East Asia and East Africa.** Working Paper Series No. 06. By Do Duc Dihn. Printed in September 2003.
15. **Success under Duress: A Comparison of the Indigenous African and East African Asian Entrepreneurs.** Working Paper Series No. 07. Timothy Ranja 2003.

16. **National Entrepreneurship in the Export of Horticultural Products in East Africa - Draft Report.** Working Paper Series No. 08. Timothy Ranja September 2003.
17. **Development of National Entrepreneurship in the East African Tourism Industry.** Working Paper Series No. 09 Timothy Ranja 2003.
18. **National Entrepreneurship in the East Africa Petroleum Marketing Industry.** Working Paper Series No. 10. Timothy Ranja 2003.
19. **To What Extent Is East Africa Globalised?** Working Paper Series No. 01. By Dr. Beatrice Kalinda Mkenda. Printed in October 2002.

TAKNET Policy Brief Series

- 1 *Growth and Poverty Reduction in Tanzania: Why such a mismatch? Synthesized by Dr. Oswald Mashindano – 2009.*
- 2 *The Impact of Information and Communication Technology (ICT) on Rural Livelihoods. Synthesized by Abdallah K. Hassan – 2009.*
- 3 *Foreign Direct Investment Incentive Package in Tanzania. Moderated Synthesized - 2009*
- 4 *Tatizo la Walemavu wa Ngozi (Albino) Tanzania: Nini Kifanyike? Synthesized by Dora Semkwiji, 2009*
- 5 *The Effect of the Global Financial crisis and the Way Forward for Tanzania. Synthesized by Dr. Donatila Kaino, 2009*
- 6 *Petroleum Policy and Constitutional Paradox in the United Republic of Tanzania. Synthesized by Festo Maro, 2009*
- 7 *What Will be the Impact of the 2009/2010 Government Budget to Economic Growth and Poverty Reduction? Synthesized by Dr. H. Bohela Lunogelo, 2009*
- 8 *Social Protection and Ageing in Tanzania. Synthesized by Festo Maro, 2009*

ESRF Staff 2009

DIRECTORATE OF PROGRAMMES

1.	Dr. H. Bohela Lunogelo	The Executive Director
2.	Dr. Oswald Mashindano	Senior Research Fellow
3.	Dr. Donatila Kaino	Senior Research Fellow
4.	Ms. Margaret Nzuki	Principal Information Officer
5.	Mr. John Kajiba	Senior Information Technology Expert
6.	Ms. Vivian Kazi	Assistant Research Fellow
7.	Mr. Apronius Mbilinyi	Assistant Research Fellow
8.	Ms. Dora Semkwiji	Assistant Research Fellow
9.	Ms. Irene Alenga	Research Assistant
10.	Ms. Monica Hangi	Research Assistant
11.	Mr. Festo Maro	Research Assistant

DIRECTORATE OF FINANCE AND MANAGEMENT SERVICES

12.	Ms. Pendo Mwandoro	Head of Finance
13.	Mr. Mellow Z. Livoga	Human Resource Manager
14.	Ms. Aldegunda Ngowi	Accountant
15.	Mr. Japhet Maginga	Accounts Assistant
16.	Mrs. Goreth Kashasha	Office Management Secretary I
17.	Ms. Jennifer Badi	Personal Secretary
18.	Mr. Raphael H. Chibindu	Office Management Secretary II
19.	Mr. Peter Mhono	Driver
20.	Mr. Francis J.E. Kaaya	Driver and Office Assistant
21.	Mr. Theo Mtega	Office Attendant
22.	Ms. Prisca Mghamba	Office Attendant
23.	Mr. Said Abdallah	Office Attendant

COLLABORATIVE PROGRAMMES STAFF

24.	Dr. Tausi Kida	PGD Programme Coordinator
25.	Mr. Abdallah Hassan	Senior Information Officer
26.	Mr. Senorine Libena	Content Editor/ Tanzania Online
27.	Ms. Jaqueline Mwijage	Secretary /Tanzania Online
28.	Ms. Femida Patwa	Course Administrator/PGD
29.	Ms Margreth Kasembe	IFP Programme Coordinator
30.	Mr. Ernest Mufuruki	Assistant Programme Coordinator/IFP

INSERT

**GRADUATION PHOTO
OF IFP**



Tanzania Online Gateway www.tzonline.org

A Gateway to Information on Development Issues in Tanzania

- An up date online database of comprehensive set of documents in full text on development issues in Tanzania
- Tanzania consultants and Job search Database www.tzonline.org/consultants
- Newspaper clipping www.tzonline.org/clippings.html

Join a group of more than 35,000 people who visit Tanzania Online every day and 30,000 subscribers for monthly updates. REGISTER TODAY! www.tzonline.org



Tanzania Knowledge Network (TAKNET) www.taknet.or.tz

An online forum for networking, knowledge sharing and information exchange

- Join a network and share your knowledge, ideas and experiences
- Contribute to the decision making process and influence policies and practices

Join now and network with other professionals for development. www.taknet.or.tz

www.taknet.or.tz



www.tzonline.org



ESRF CONFERENCE HALL



- Full Air conditioned
- LCD TV
- Over 100 pax seating capacity
- PA System
- Projector
- Backup generator
- Internet connection

For reservation contact:

The Economic and Social Research Foundation (ESRF)

Tel: +255 22 2760260/2760758/2760751-52

Fax: +255 22 2760062

E-mail: esrf@esrf.or.tz • Website: <http://www.esrftz.org>



INSERT

**PILLARS TANZANIA
DEVELOPMENT VISION 2025**